

Specification/Data sheet

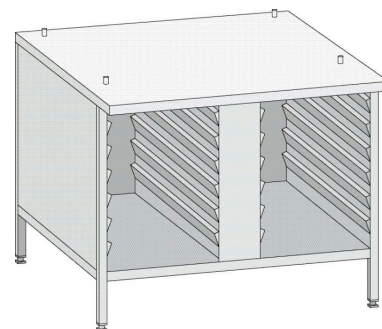
Cabinet US 3 type 61/101 - Marine version



Article number: 60.30.336

Description

- Marine version (hygiene version)
- 14 Rails
- 671 mm height (27 3/8")
- Rail distance 65 mm
- Free space from lowest rack to the bottom plate 57 mm
- Top panel, intermediate bottom, deep-drawn shelf rests
- Adjustable feet
- Deep-drawn beaded side panels
- Weight 36 kg
- 845(33-1/4) mm(inch)W x 724(29) mm(inch)D x 671(26-3/8) mm(inch)H



Difference to standard

- Special stainless steel feet for direct fastening on the floor
- Containers secured against sliding out

Capacity (GN-container/grids)

- 1/1 GN Grid x 14
- 1/1 Baking trays/grids x 14
- 1/1 GN Baking tray, aluminium perforated x 14
- 1/1 GN 20 mm deep x 14
- 1/1 GN 40 mm deep x 14
- 1/1 GN 65 mm deep x 13
- 1/1 GN 100 mm deep x 8
- Use of other containers 1/3 GN, 1/2 GN, steam pans 12" x 20", hotel pans 13" x 18" (2/3 GN, 1/4 GN crosswise)

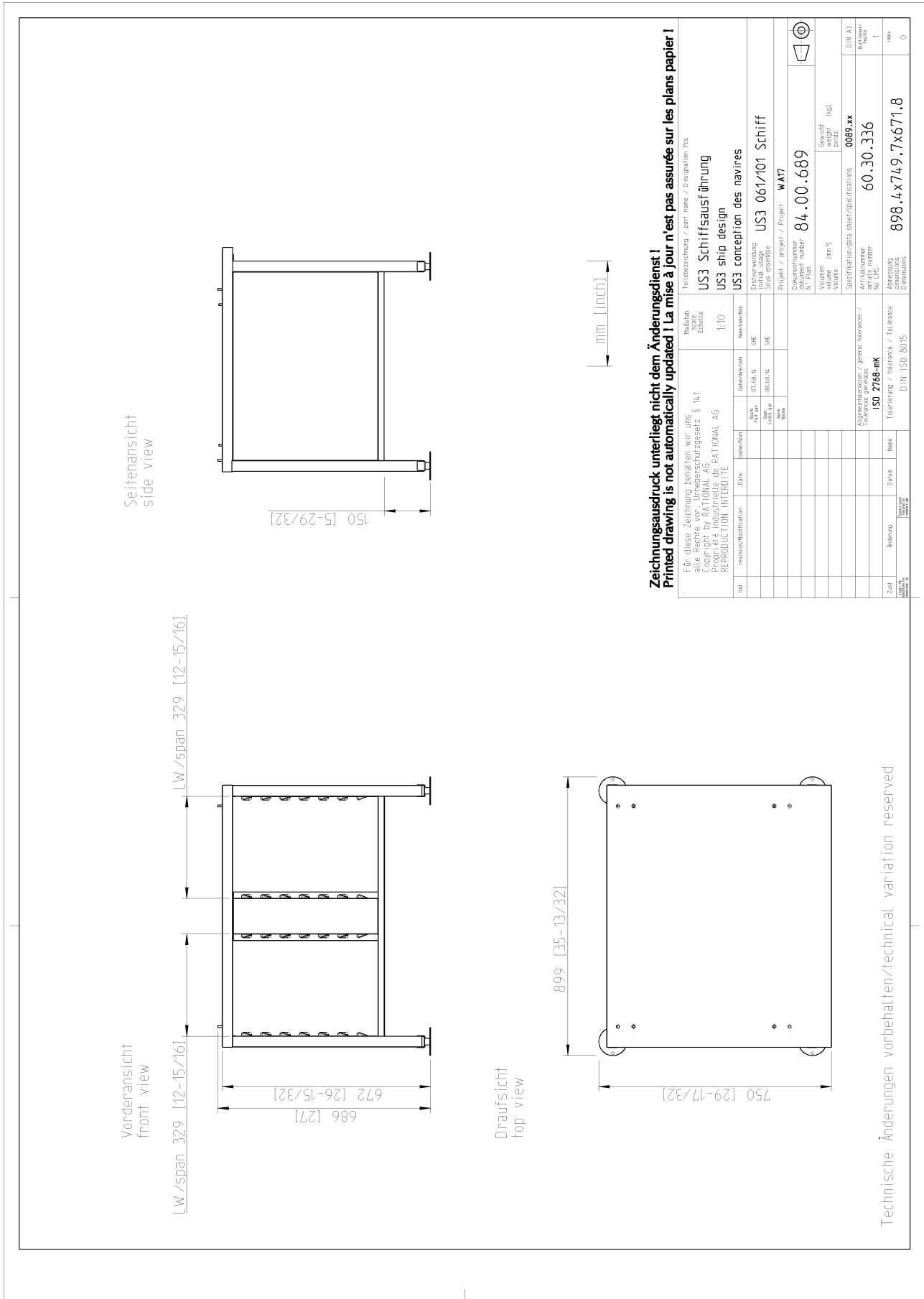
Material

- CNS 1.4301, CNS 304 (incl. feet)

Hint

- Use in conjunction with fastening kit for mounting the cabinet on the floor (included in the delivery)

Specification/Data sheet
Cabinet US 3 type 61/101 - Marine version



Zeichnungsausdruck unterliegt nicht dem Änderungsdienst!
Printed drawing is not automatically updated! La mise à jour n'est pas assurée sur les plans papier!

Für diese Zeichnung behalten wir uns alle Rechte vor. Urheberrechtsgesetz § 14 I Copyright by RATIONAL AG. Toute réimpression ou reproduction non autorisée sans la permission écrite de la RATIONAL AG est formellement interdite.		Teilbezeichnung / part name / Désignation Pcs	
US3 Schiffsauführung		US3 Schiffsauführung	
US3 ship design		US3 ship design	
US3 conception des navires		US3 conception des navires	
Maßstab / Echelle		1:10	
Materialeigenschaften / general. materials / Les caractéristiques des matériaux		07.08.14 SHE	
Date		08.08.14 SHE	
Name / Nom		WAT7	
Beschreibung / Description		US3 061/101 Schiff	
Abmessung / Dimensions		84.00.689	
Gewicht / Poids		0089,xx	
Artikelnummer / article number		60.30.336	
Abmessung / Dimensions		898.4x749.7x671,8	
Toleranz / Tolerance		DIN ISO 8015	
Zustimmung / Approval		DIN A3	
Blatt / Sheet		1	
Blattzahl / Number of sheets		0	

Technische Änderungen vorbehalten/technical variation reserved