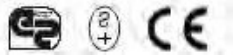
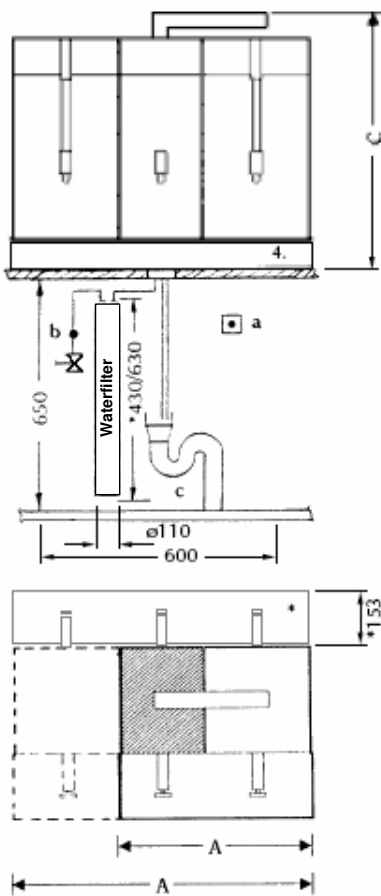


Specifications and installation diagram Melitta® 600 - Marine version – preliminary -

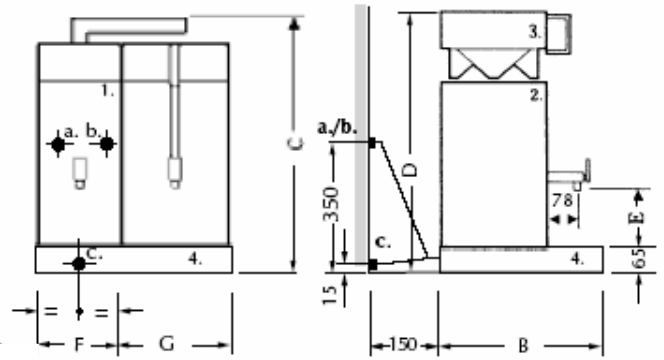


Beukenhorst Coffee USA Inc .
+1 561 514 3559 . info@beukenhorst-usa.com

Installation example, connections below table



Installation example, connections above table



Dimensions	A	B	C	D	E	F	G	Capacity: kW, Fuse: A	Total weight, full in kg
Type									
M608-1	580	475	805	828	160	245	292	7,08/16	50
M608-2	875	475	805	828	160	245	292	7,20/16	75
M620-1	727	575	938	1015	190	292	392	12,05/20	90
M620-2	1124	575	938	1015	190	292	392	12,32/20	142

1. Autom. hot water heater KWA
2. Warming unit Wa
3. PYRAMID FILTER SF
4. Base plate

* Upon request, the M608-1 / M608-2 can be furnished with a tap for guests to draw coffee and hot water as well as a detached drip bar.



Data specification Melitta® 600

Filter coffee machine - Marine version – preliminary -

Specification

Filter coffee machine for volume preparation, storage and dispensing of (depending on the model):

1 x 8 to 2 x 20 liters of filter coffee as well as dispensing of hot water.

The machine consists of the following assemblies:

- 1 brewing column with swivel spout
- 1 or 2 warming units (with 8 or 20 liters capacity)
- Pyramid filter with filter cover
- Base plate with drip tray



Electrical and hydraulic connections

- Electrical connection
For brewing column: 1 x 400/440 VAC, 3 Phases without N, 50-60 Hz
For each urn: 1 x 220 VAC, 1 Phase, 50-60 Hz
- Water connection DN 15 – R ¾" outside thread.
- Static water line pressure min. 2.0 bar.
- Drain connection: NW 25 - 1".

Technical data: Output coffee cups/h

Depending on the model:

- Coffee approx. 210 - 640 (125 ml)
- Hot water approx. 26 – 80 liters

Warranty:

Legal warranty does not include normal wear, occurring, for example, on the following parts:

- Seals of all types
- Lighting elements
- Coffee strainers
- Lines / coffee lines
- Filters inside the machine, filter for water conditioning
- Pump heads (water section)

The legal warranty does not cover damages caused by improper handling or through unauthorized modifications of the factory-set condition, for example, on:

- Porcelain, glass
- Electrical safety switching devices (STB, cut-out fuses, electrical fuses)
- Hinges
- Plastic parts subject to external cleaning
- Key and magnetic cards
- All loosely supplied components
- All treated and refined surfaces including paint coat

As a prerequisite for the warranty, the care and cleaning regulations must be observed including the appropriate intervals.

These are: after every 80 000 cups or 1 year -> first major maintenance

The warranty also requires the use of the following:

- the water conditioning system specified
- the specified coffee powder (mix/roasting)
- as well as ensuring the required daily or weekly cleaning cycle.