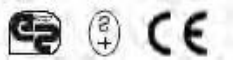
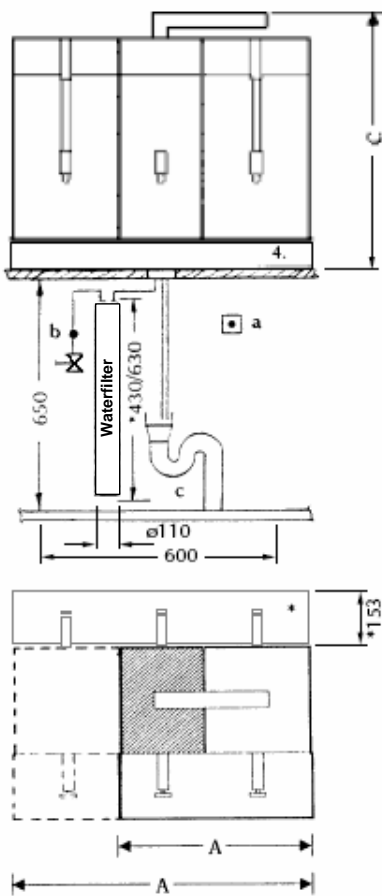


Specifications and installation diagram Melitta® 608-2 (220V) - Marine version – preliminary –

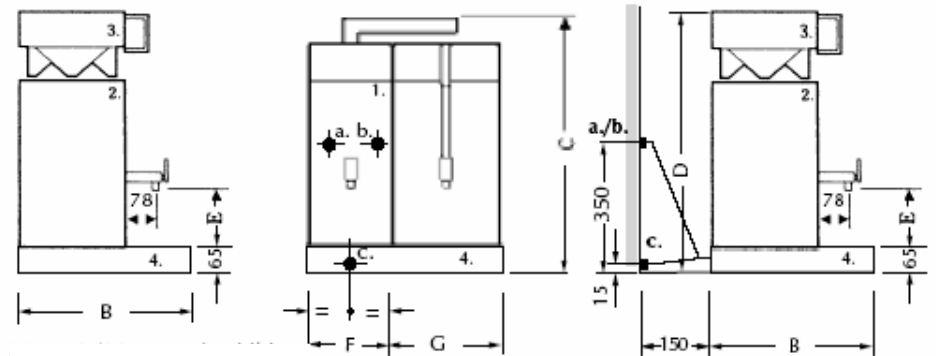


info@beukenhorst-usa.com
'marine specified' machines

Installation example, connections below table



Installation example, connections above table



Dimensions	A	B	C	D	E	F	G	Capacity: kW,	Total weight, Fuse: A full in kg
Type									
M608-2	875	475	805	828	160	245	292	4.7 kW	~75
								25 A	

1. Autom. hot water heater KWA
2. Warming unit Wa
3. PYRAMID FILTER SF
4. Base plate

* Upon request, the M608-1 / M608-2 can be furnished with a tap for guests to draw coffee and hot water as well as a detached drip bar.

Data specification Melitta® 608-2 (220V)

Filter coffee machine - Marine version – preliminary –



Specification

Filter coffee machine for volume preparation, storage and dispensing of:
2 x 8 liters of filter coffee as well as dispensing of hot water.

The machine consists of the following assemblies:

- 1 brewing column with swivel spout
- 2 warming units (with 8 liters capacity)
- Pyramid filter with filter cover
- Base plate with drip tray



Electrical and hydraulic connections

- Electrical connection
For brewing column: 220 VAC, 50-60 Hz; supplied connection: cable head without plug for individual installation
For each urn: 1 x 220 VAC, 50-60 Hz; supplied connection: Schuko Power Plug
- Water connection DN 15 – R ¾" outside thread.
- Static water line pressure min. 2.0 bar.
- Drain connection: NW 25 - 1".

Technical data: Output coffee cups/h

Depending on the model:

- Coffee approx. 260 (depending on the cup size)
- Hot water approx. 10 liters

Warranty:

Legal warranty does not include normal wear, occurring, for example, on the following parts:

- Seals of all types
- Lighting elements
- Coffee strainers
- Lines / coffee lines
- Filters inside the machine, filter for water conditioning
- Pump heads (water section)

The legal warranty does not cover damages caused by improper handling or through unauthorized modifications of the factory-set condition, for example, on:

- Porcelain, glass
- Electrical safety switching devices (STB, cut-out fuses, electrical fuses)
- Hinges
- Plastic parts subject to external cleaning
- Key and magnetic cards
- All loosely supplied components
- All treated and refined surfaces including paint coat

As a prerequisite for the warranty, the care and cleaning regulations must be observed including the appropriate intervals.

These are: after every 80 000 cups or 1 year -> first major maintenance

The warranty also requires the use of the following:

- the water conditioning system specified
- the specified coffee powder (mix/roasting)
- as well as ensuring the required daily or weekly cleaning cycle.