

## JES JET EXTRACTION SYSTEM

For show cooking areas



### JES PRODUCT OPTIONS

- Rectangular model
- Round model
- Halton Skyline Culinary Lights
- Luminary ring
- Built in fire suppression system (only available for rectangular model)
- Duct safety monitoring system
- UV-light technology

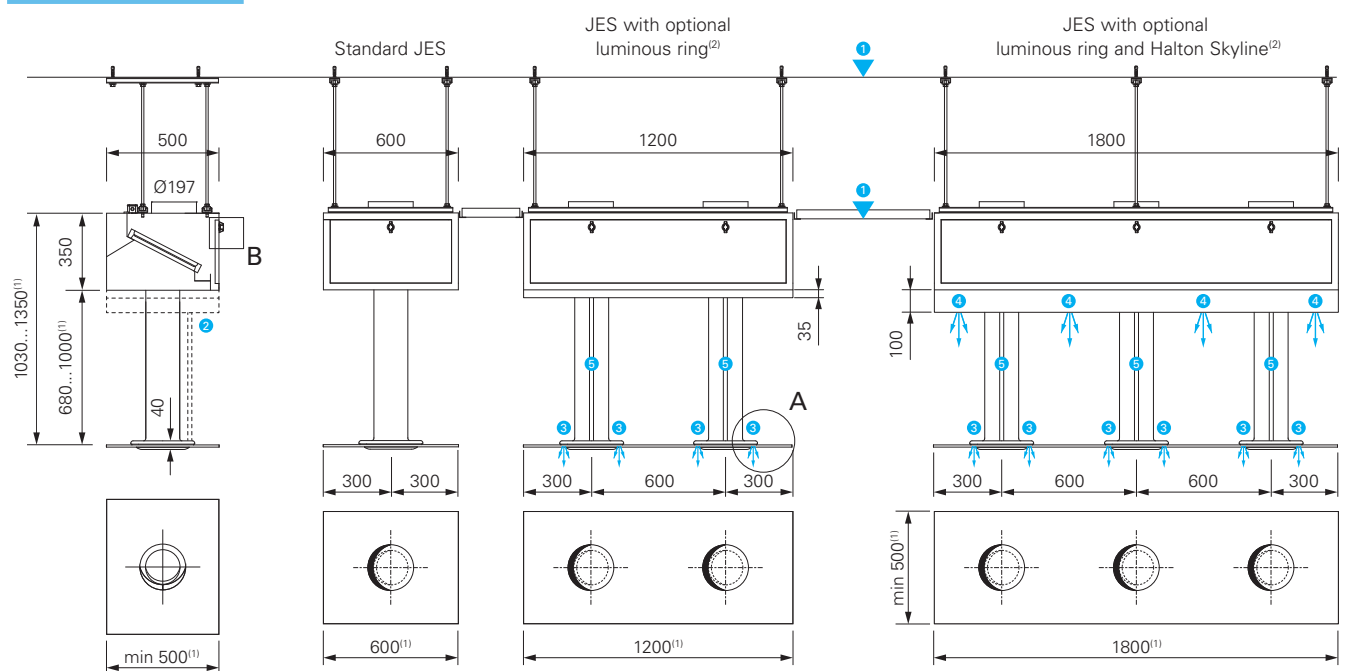
### APPLICATIONS

The JES jet extraction system is especially designed for show cooking areas or architectural cooking concepts with low-emission appliances such as grills, woks or hotplates with medium power.

### FEATURES

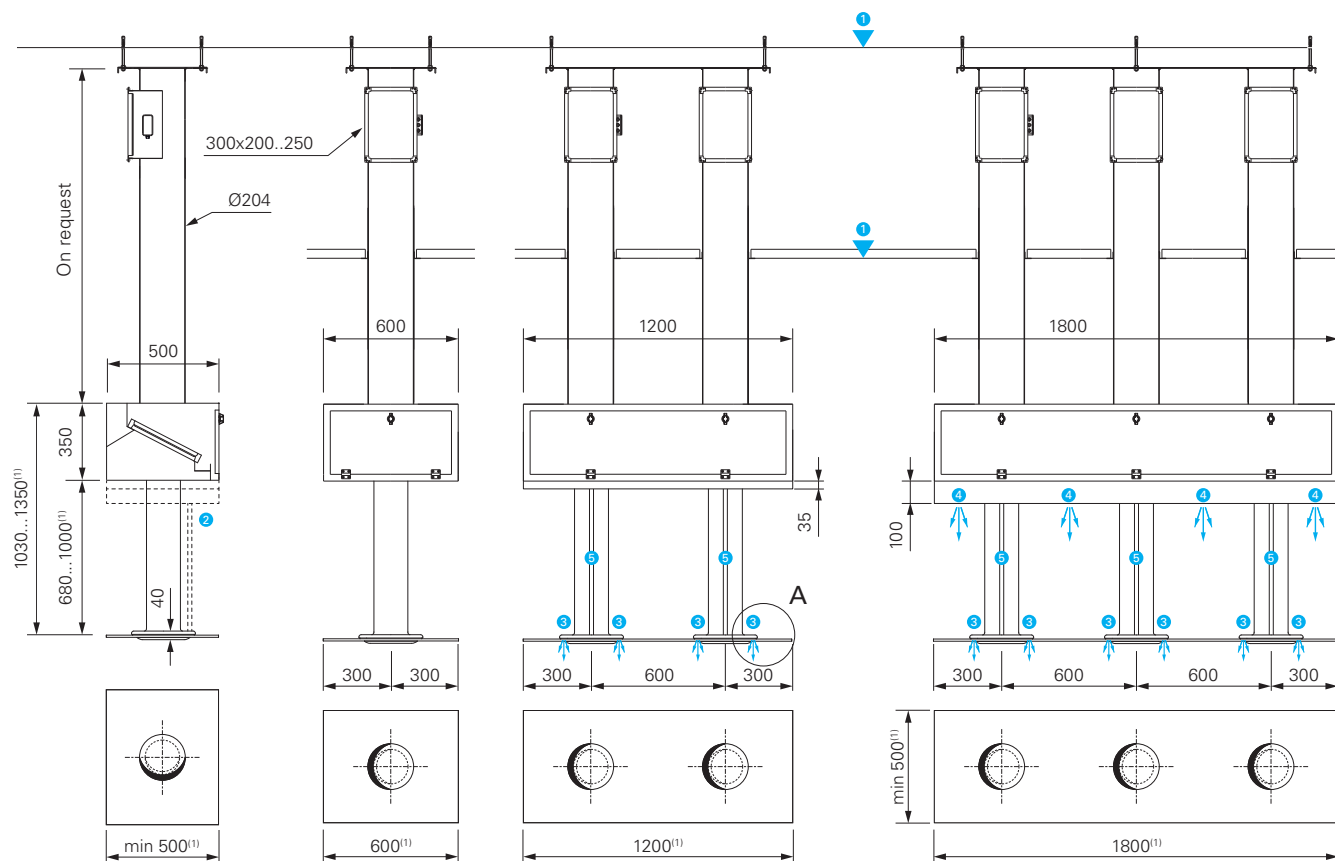
- Designed to highlight the architectural aesthetics of distribution or show cooking areas.
- Energy savings due to an excellent exhaust/efficiency balance.
- 95% capture efficiency due to cyclonic extraction and to the proximity of the glass to the source (no dispersal of odours or smoke).
- Particularly suitable for cooking islands subject to horizontal sweeping phenomena (due to the possible presence of other extraction systems or hoods installed nearby).
- Optimal thermal and acoustic comfort in the work zone due to the low level of exhaust rates.
- The smooth surface and rounded edges minimise maintenance to simple and inexpensive cleaning operations.
- Lower ductwork maintenance costs thanks to highly efficient AS filters.
- The glass plate doubles as a sneeze-guard for guests and staff.
- Better use of natural lighting and the impression of space due to there being no hoods to obstruct the eye.
- Possibility to co-ordinate the colour to that of the decor.

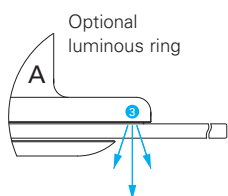
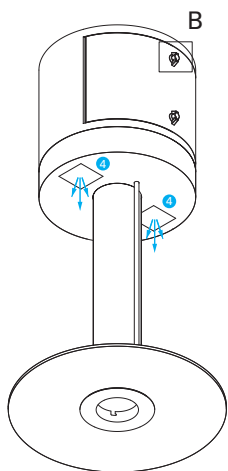
## JES / DIMENSIONS



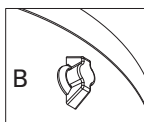
- ① - Slab and false ceiling heights (self supported)
- ② - Plenum extension and cable duct for the optional luminous ring and/or Halton Skyline Culinary light
- ③ - Optional luminous ring
- ④ - Optional Halton Skyline Culinary Light
- ⑤ - Cable duct

(1) Other dimensions on request  
 (2) Options available whatever the number of nozzles

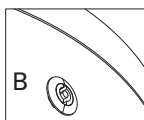




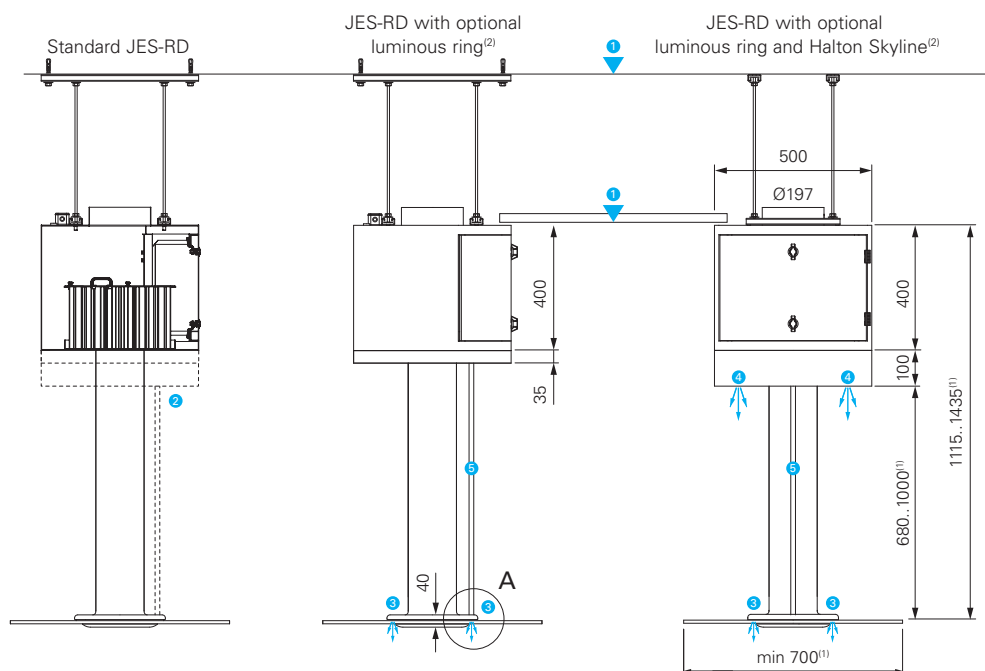
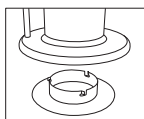
Standard lock



Optional key lock



Grease cup



- ① - Slab and false ceiling heights (self supported)
- ② - Plenum extension and cable duct for the optional luminous ring and/or Halton Skyline Culinary light
- ③ - Optional luminous ring
- ④ - Optional Halton Skyline Culinary Light
- ⑤ - Cable duct

(1) Other dimensions on request

(2) Options available whatever the number of nozzles

