



PRO 700: BASE UNITS

4 options:

- GN units
- Drawers GN1/6
- Electric hot cupboard
- Open base
- Cupboard with doors



400 mm



600 mm



800 mm

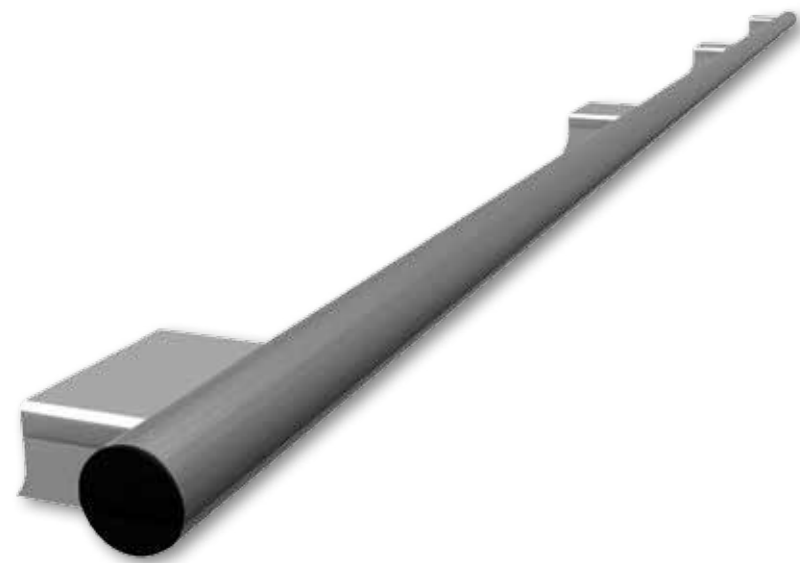


1200 mm



PRO 700: OPTIONS AND PERSONNALISATION

- Bright polish rail
- Removable plating shelves
- Chefs sink
- One piece top
- Castors
- g/n drawers
- mixer tap
- removable plinth



Heavy duty

- s/s construction
- 2mm thick top
- s/s legs – 180/210mm H
- Enamelled control panel with markings



Hygiene

- Stainless steel construction throughout
- 2mm thick work tops
- Stainless steel legs – 180/210mm. H
- Enamelled control panels and indicator markings



Performance

- 6.5kw open burners with integrated pilots
- Flush solid tops
- Gn2/1 ags or electric ovens
- Multitube enamelled burners for even temperature



Personnalisation

- Continuing the Charvet tradition of tailoring cooking suites to specific requirements
- One piece work tops to special order
- Stainless steel plinth panels
- Enamelled panels – choice of colour available
- Central island, wall and cantilever cooking suite configurations
- Compatible with under counter refrigeration



1170, rue Principale BP 3, 38850 Charavines France - Tél : 33 (0) 476 066 422 - Fax : 33 (0) 476 557 875
www.charvet.fr - info @charvet.fr

LES AUTHENTIQUES DE LA CUISSON



700 SERIES



The compact range from Charvet



- A complete range for smaller kitchens
- Compact
- High performance
- Heavy Duty



Document non contractuel : Charvet se réserve le droit de modifier les caractéristiques techniques sans préavis. Conception graphique : Wambler 06 28 34 79 53 - Mars 2013

PRO 700 SERIES

PRO 700: GAS AND ELECTRIC OVEN RANGES

FULL MODULES 800 W - 700 D - 900 H



- Gas and electric GN2/I static ovens
- Fan assisted GN1/I electric ovens (available 2013)

PRO 700: BRIDGE UNIT 600mm W

**600mm. GAS – ELECTRIC AND NEUTRAL UNITS
600W. 700D. 280mm. H.**



- Large gas simmer plate (8kw)
- Gas chromeplancha (7kw) & electric (5.5kw) – 400 x 500mm
- Gas steel plancha (7 kW) & Elec (5.5kW) 400 x 450 mm
- 4 electric plates 220x 220mm (10.4kw)

PRO 700: BRIDGE UNITS 400mm W

400 GAS MODULES - 400 W. 700 D. 280mm. H.



- 2 open burners under nickel coated steel pan support – 330 x 520mm (6.5 kW each)
- solid tops – 330 x 520mm (5kW each)
- ribbed/smooth cast griddles – 350mm x 495mm (7kW)
- chrome ribbed/smooth griddles – 365 x 500mm (7kW each)
- Chargrill (8kw)

PRO 700: BRIDGE UNIT – 800mm W (280mm H)

800mm GAS – ELECTRIC AND NEUTRAL UNITS – 800 W - 700 D - 280 H

- 4 open burners under nickel coated steel pan support – 330 x 520mm (6.5 kW each)
- 2 solid tops – 330 x 520mm (5kW each)
- 1 solid top + 2 open burners (6.5kW each)
- 2 open burners + 1 solid top
- 2 ribbed / smooth cast griddles – 350 x 495mm (7kW each)



- 4 electric plates – 220 x 220mm (2.6kW each)
- 4 radiant hobs under vitroceramic cooking surface (2.1 kW each)
- 2 ribbed/smooth cast griddles – 350mm x 495mm (3.3kW)
- 2 chrome ribbed/smooth griddles – 365 x 500mm (3.3kW each)
- Bain-marie GN2/I (3kW)
- Pasta cooker (4kw) with 4 square baskets GN1/6
- 2 8L fryers (7.5kw each) – **bridge unit or technical cupboard**
- 2 14L fryers (12kw each) – **on technical cupboard only**

PRO 700: CONFIGURATIONS



Wall Suite with bridge units to allow roll under refrigeration.



Central island cooking suite of bridge units on base supports and freestanding units.



Central island of bridge units suspended on central services wall.

400 ELECTRIC MODULES - 400 W. 700 D. 280mm. H.

- 2 electric plates – 220 x 220mm (2.6kW each)
- 2 radiant hobs under vitroceramic cooking surface (2.1 kW each)
- Ribbed/smooth cast griddles – 350mm x 495mm (3.3kW)
- Chrome ribbed/smooth griddles – 365 x 500mm (3.3kW each)
- 2 x7L fryers (8kw each) – **on technical cupboard**
- 14L fryers (12kw each) – **on technical cupboard**
- 8L fryers (7.5kw each) – **bridge unit or technical cupboard**
- Bain-marie GN2/I (3kW)
- Gas and electric GN2/I static ovens
- Fan assisted GN1/I electric ovens (available 2013)
- Induction 2 x 3.5kw diam 220mm

